

PLANMECA

Complete solution for orthodontics



Complete solution for orthodontics

Planmeca provides all modern tools for orthodontics from the capturing of bone and tooth structures for diagnosis to in-house or outsourced treatment planning and appliance manufacturing. The complete solution will greatly help orthodontists to succeed in their daily work.



Planmeca Emerald® S

- Hyper-speed and accurate intraoral scanning
- Optimum for full arch scanning



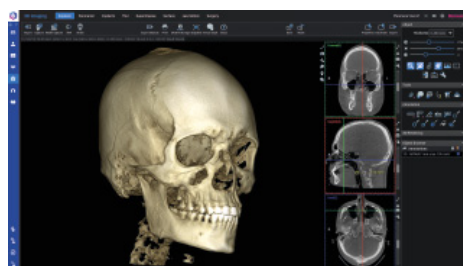
Planmeca Creo® C5

- 3D printing of models for aligner manufacturing
- Designed for dentistry
- Remarkably fast printing time



Planmeca Viso® family Planmeca ProMax® 3D family

- CBCT acquisition
- 3D photo scanning
- Ultra low dose imaging without reductions in image quality
- Automatic patient movement correction
- Wide selection of volume sizes



Planmeca Romexis®

- One software for all needs
- Diagnosis and analysis
- Treatment planning for creating aligners
- Printing of models
- Before and after comparison



HeySmile
alineadent
orthocaps®
BIOTECH DENTAL
SMILERS
DW Lingual Systems GmbH
ClearCorrect
OrthoApnea
clearcaps™
SLX Clear Aligners

Services

- Order clear aligners from HeySmile service (Planmeca Group)
- Order other aligner and sleep apnea devices from compatible service providers
- Full list of compatible providers: planmeca.com/orthocompliance



Planmeca Oy Asentajankatu 6, 00880 Helsinki, Finland
Tel. +358 20 7795 500, sales@planmeca.com, www.planmeca.com

PLANMECA

CE 0598 MD Planmeca Romexis CE MD Planmeca Emerald CE Planmeca Creo C5 CE 0598 MD Planmeca Viso CE 0598 MD Planmeca ProMax